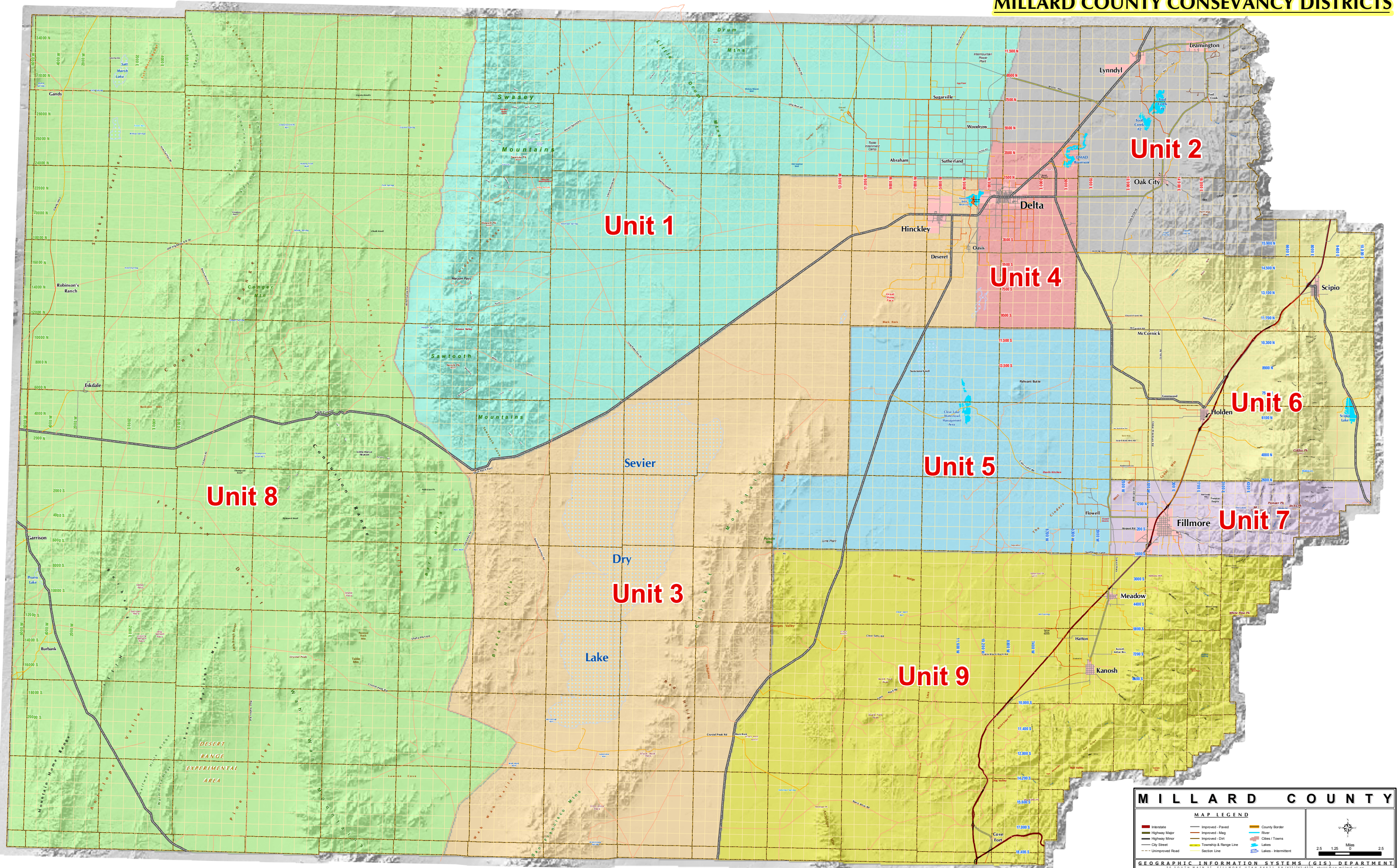


MILLARD COUNTY CONSEVANCY DISTRICTS



MILLARD COUNTY

MAP LEGEND

Interstate	Improved - Paved	County Border
Highway Major	Improved - Mag	River
Highway Minor	Improved - Dist	Cities / Towns
City Street	Township & Range Line	Lakes
Unimproved Road	Section Line	Lakes - Intermittent

Scale: 0 2.5 1.25 Miles

Geographic Information Systems (GIS) DEPARTMENT
63 SOUTH MAIN ST. FILLMORE UTAH 84601 PH: (435) 743-4522 FAX: (435) 743-4524

Printed: 12/1/2009