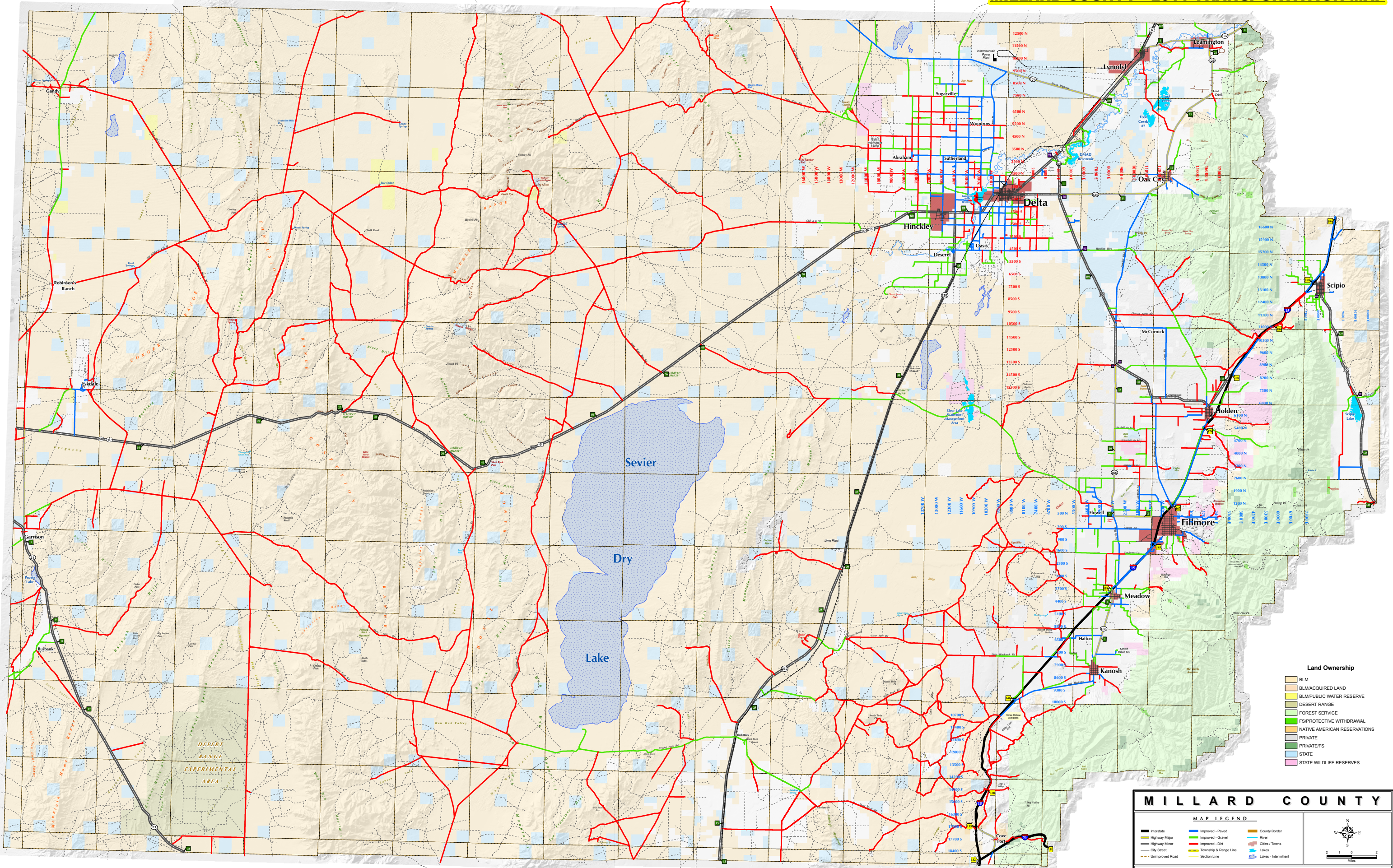


MILLARD COUNTY - 2011 TRANSPORTATION MAP



- Land Ownership**
- BLM
 - BLM ACQUIRED LAND
 - BLM PUBLIC WATER RESERVE
 - DESERT RANGE
 - FOREST SERVICE
 - FS PROTECTIVE WITHDRAWAL
 - NATIVE AMERICAN RESERVATIONS
 - PRIVATE
 - PRIVATE/FS
 - STATE
 - STATE WILDLIFE RESERVES

MILLARD COUNTY

MAP LEGEND

Interstate	Improved - Paved	County Border
Highway Major	Improved - Gravel	River
Highway Minor	Improved - Dirt	City / Towns
City Street	Unimproved Road	Lake
Unimproved Road		Lakes - Intermittent

GEOGRAPHIC INFORMATION SYSTEMS (GIS) DEPARTMENT
 50 SOUTH MAIN ST. FILLMORE, UTAH 84201 PH (435) 747-4322 FAX (435) 747-4323